



# HCHOMES

UNIQUELY NORTHWEST



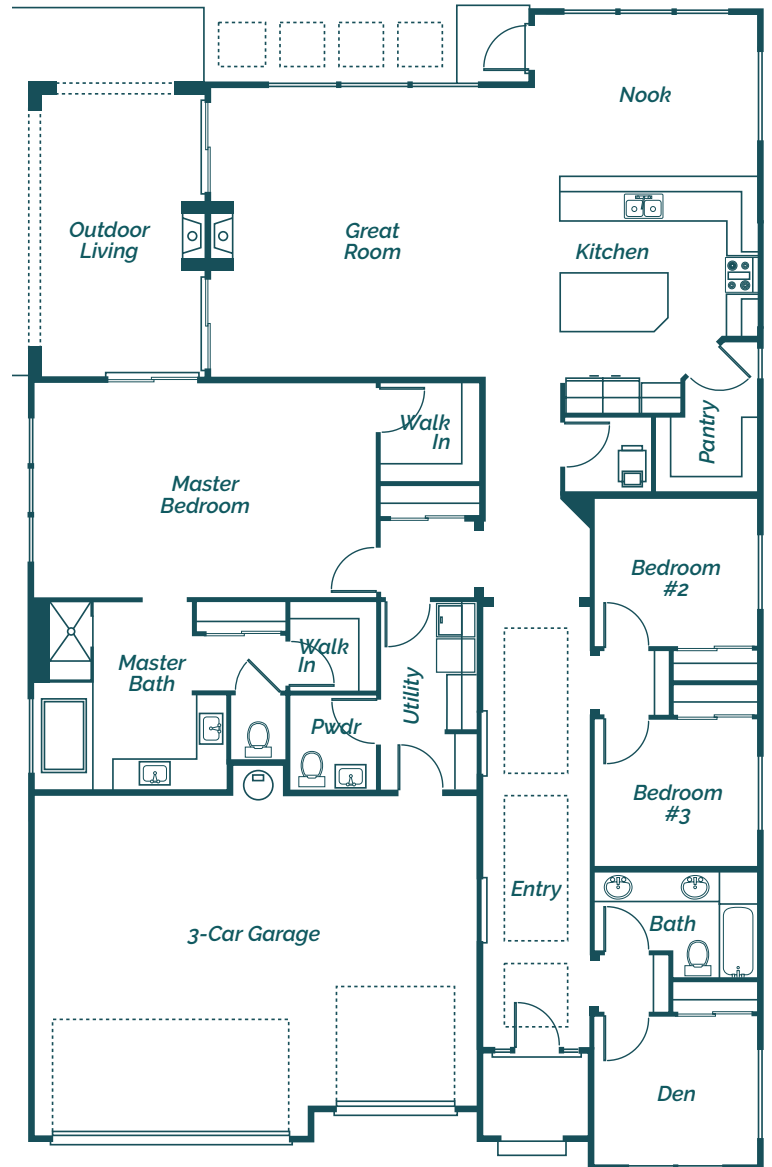
PLAN NAME: **PACIFIC (PLAN A)**

## PROPERTY HIGHLIGHTS

- *Approx. 2,702 Total Living Sq. Ft.*
- *5-Piece Master Bath*
- *All Wood Custom Cabinets*
- *Slab Granite in Kitchen*
- *Front & Backyard Landscaping*
- *Covered Outdoor Living Area with Gas Fireplace*

Our Pacific plan is our rambler option. It's spacious layout offers 3 bedrooms complete with a large master suite featuring 2 walk-in closets, 5-piece master bath and an additional full linen closet. Enjoy an expansive open living concept with full bar counter in the kitchen, large great room, and access to the outdoor living space. The Pacific plan also includes a cozy den and 3-car garage.

RAMBLER FLOORPLAN



**PLEASE NOTE:** In a continuous effort to balance market demands for quality and affordability, the builder of this property reserves the right to change plan specifications, prices and availability without notice.



# HCHOMES

UNIQUELY NORTHWEST



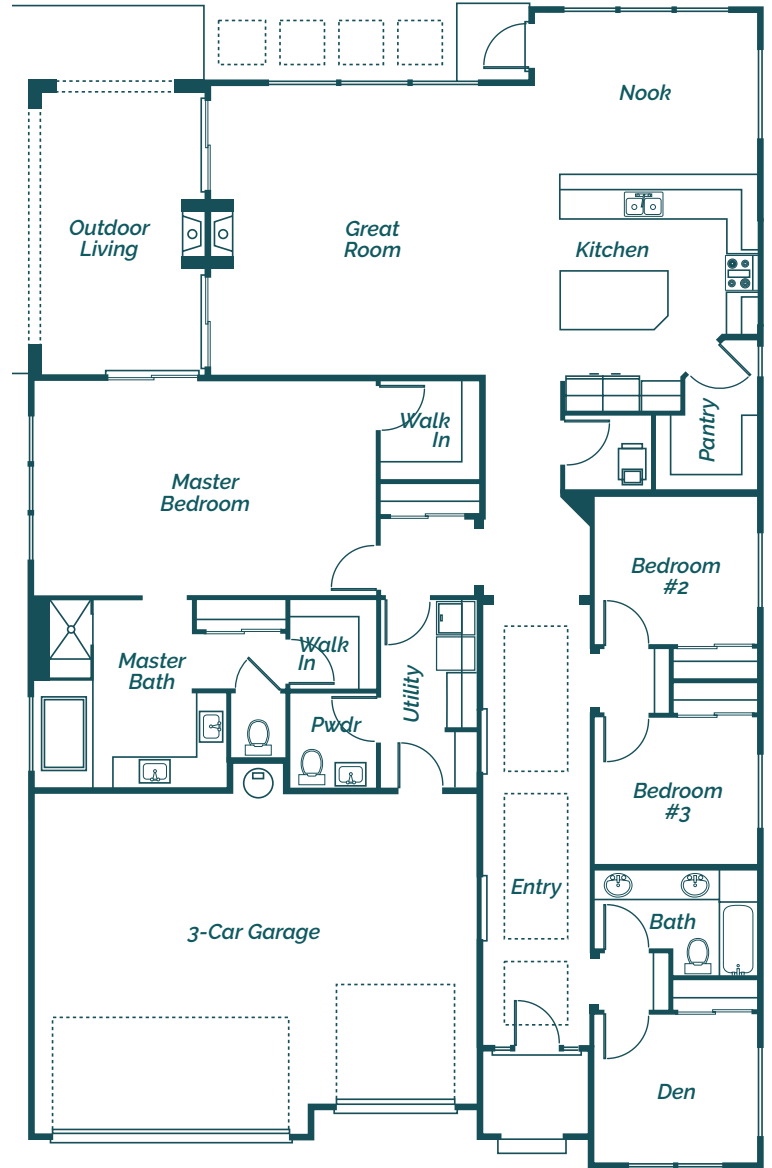
PLAN NAME: **PACIFIC (PLAN B)**

## PROPERTY HIGHLIGHTS

- *Approx. 2,702 Total Living Sq. Ft.*
- *5-Piece Master Bath*
- *All Wood Custom Cabinets*
- *Slab Granite in Kitchen*
- *Front & Backyard Landscaping*
- *Covered Outdoor Living Area with Gas Fireplace*

Our Pacific plan is our rambler option. It's spacious layout offers 3 bedrooms complete with a large master suite featuring 2 walk-in closets, 5-piece master bath and an additional full linen closet. Enjoy an expansive open living concept with full bar counter in the kitchen, large great room, and access to the outdoor living space. The Pacific plan also includes a cozy den and 3-car garage.

RAMBLER FLOORPLAN



**PLEASE NOTE:** In a continuous effort to balance market demands for quality and affordability, the builder of this property reserves the right to change plan specifications, prices and availability without notice.



# HCHOMES

UNIQUELY NORTHWEST



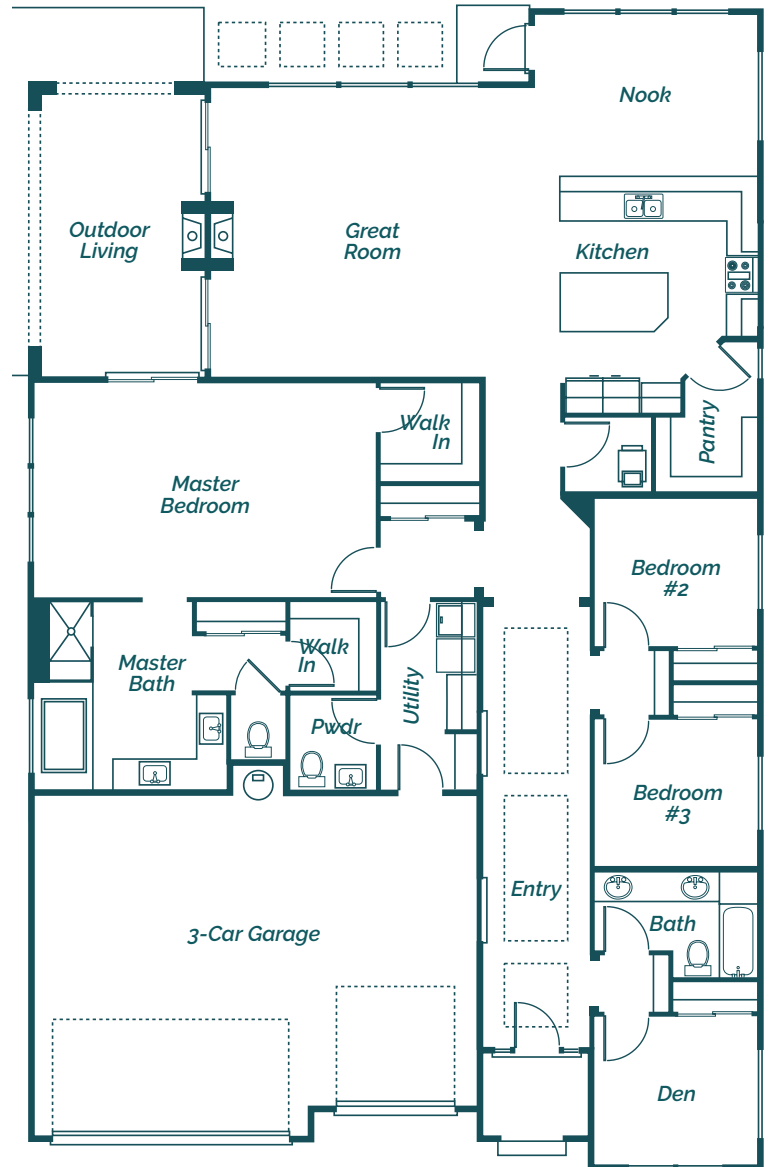
PLAN NAME: **PACIFIC (PLAN C)**

## PROPERTY HIGHLIGHTS

- *Approx. 2,702 Total Living Sq. Ft.*
- *5-Piece Master Bath*
- *All Wood Custom Cabinets*
- *Slab Granite in Kitchen*
- *Front & Backyard Landscaping*
- *Covered Outdoor Living Area with Gas Fireplace*

Our Pacific plan is our rambler option. It's spacious layout offers 3 bedrooms complete with a large master suite featuring 2 walk-in closets, 5-piece master bath and an additional full linen closet. Enjoy an expansive open living concept with full bar counter in the kitchen, large great room, and access to the outdoor living space. The Pacific plan also includes a cozy den and 3-car garage.

RAMBLER FLOORPLAN



**PLEASE NOTE:** In a continuous effort to balance market demands for quality and affordability, the builder of this property reserves the right to change plan specifications, prices and availability without notice.