



# HCHOMES

UNIQUELY NORTHWEST

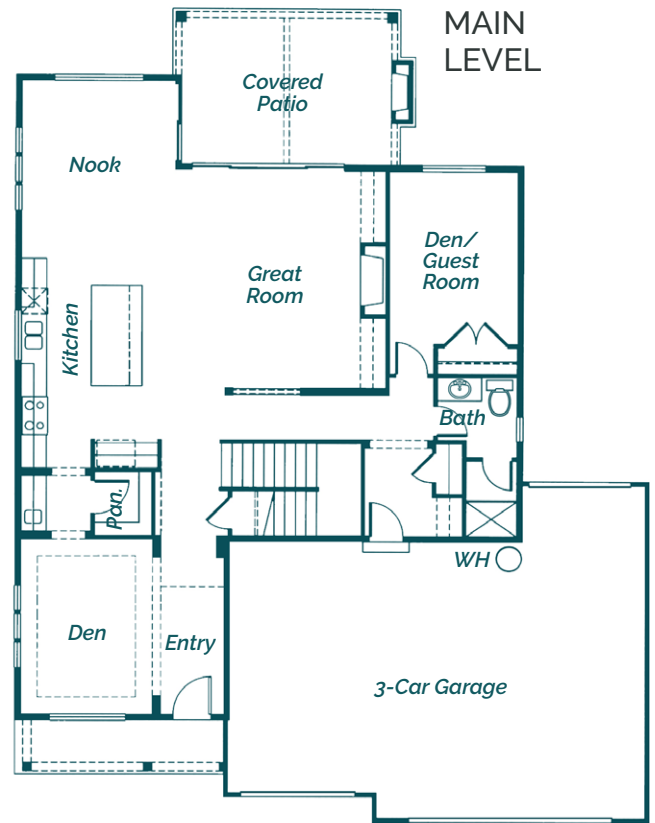
PLAN NAME: **CARDINAL (PLAN A)**



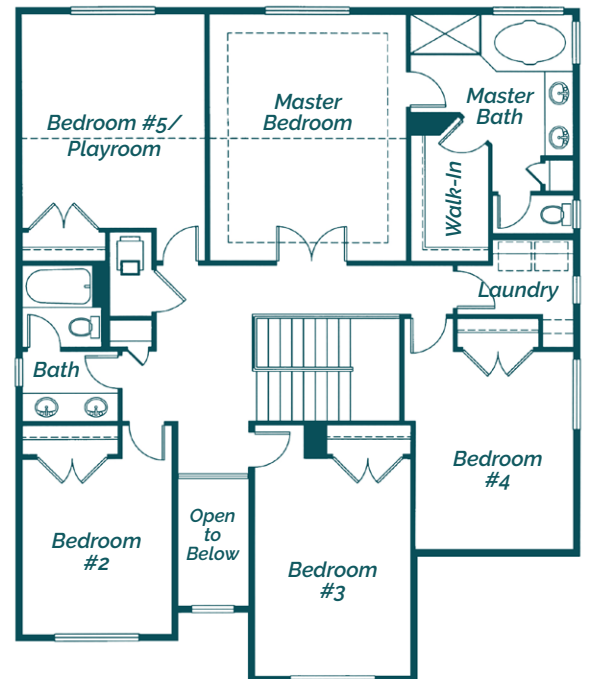
## PROPERTY HIGHLIGHTS

- *Approx. 3,168 Total Living Sq. Ft.*
- *5 Bedrooms & 2.75 Bathrooms*
- *Island Kitchen with Walk-In Pantry*
- *Den/Guest on Main*
- *Large Master Suite with 5-Piece Master Bath*
- *Covered Outdoor Living Area with Gas Fireplace*
- *3-Car Garage*

Our 3168 plan is a generously sized home with multiple options for entertaining and living. Enjoy an open concept kitchen and great room that overlooks a covered patio complete with fireplace. The main level also offers a guest bedroom or convert it to a functional den. The upper level features a vaulted master suite with a spacious 5-piece bath and walk-in closet. Also enjoy 4 additional bedrooms, full bath and laundry room.



## UPPER LEVEL



**PLEASE NOTE:** In a continuous effort to balance market demands for quality and affordability, the builder of this property reserves the right to change plan specifications, prices and availability without notice.

HCHOMES.NET