



HCHOMES

UNIQUELY NORTHWEST

PLAN NAME: RHODODENDRON (PLAN A)

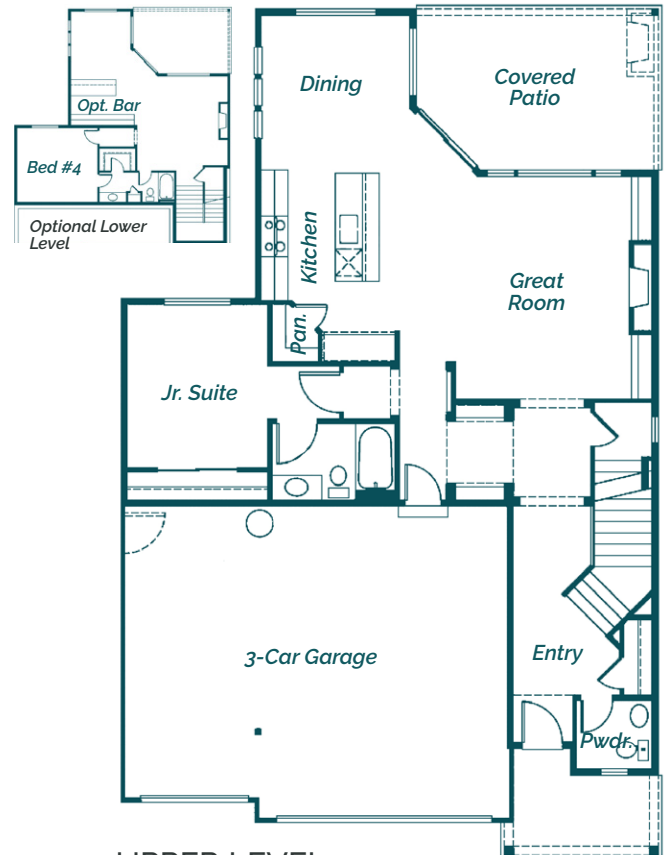


PROPERTY HIGHLIGHTS

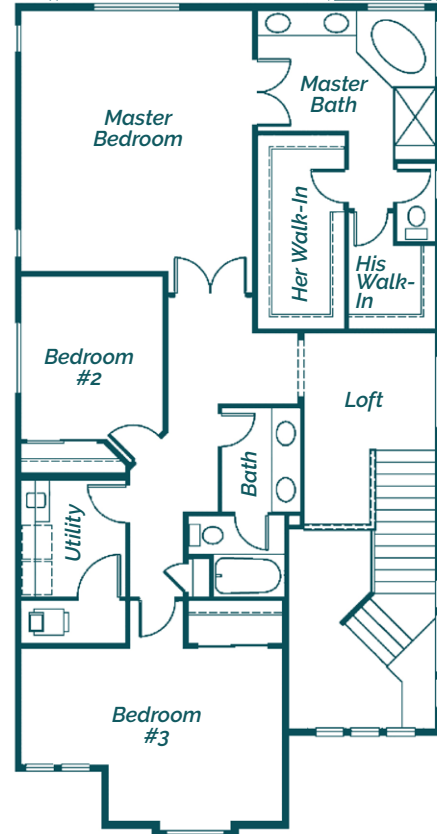
- *Approx. 3,832 Total Living Sq. Ft.*
- *5-Piece Master Bath*
- *All Wood Custom Cabinets*
- *Slab Granite in Kitchen*
- *Front & Backyard Landscaping*
- *Covered Outdoor Living Area with Gas Fireplace*

Our Rhododendron plan is an elegant Northwest inspired design featuring a generous open living concept with a beautiful great room overlooking a covered outdoor living area. The main level also offers a Jr. master suite complete with full bath. The upper level has a comfortable master suite with a 5-piece master bath and his & her walk-in closets. Upstairs also features 2 additional bedrooms, a large utility room, loft and full bath,

MAIN LEVEL



UPPER LEVEL



PLEASE NOTE: In a continuous effort to balance market demands for quality and affordability, the builder of this property reserves the right to change plan specifications, prices and availability without notice.



HCHOMES

UNIQUELY NORTHWEST

PLAN NAME: RHODODENDRON (PLAN B)

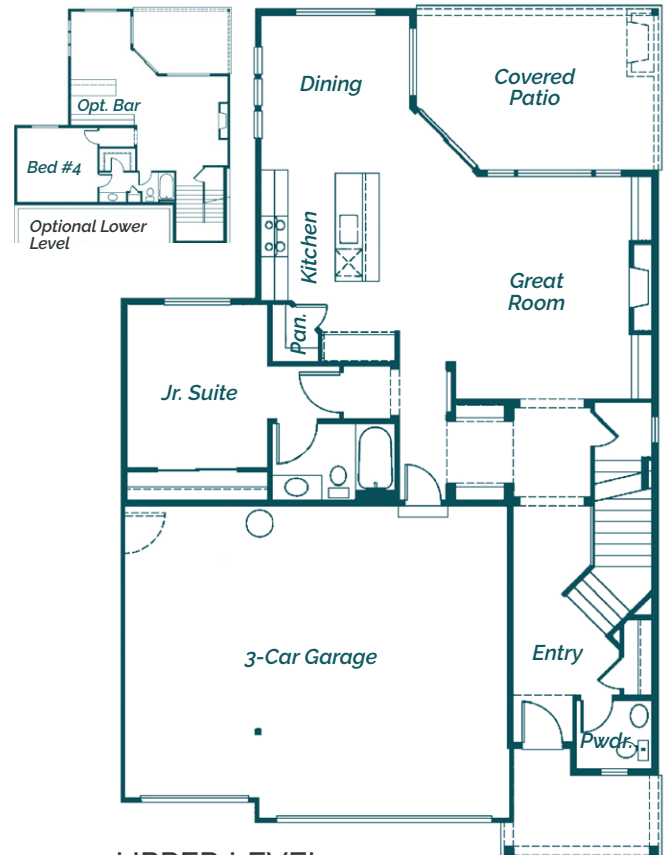


PROPERTY HIGHLIGHTS

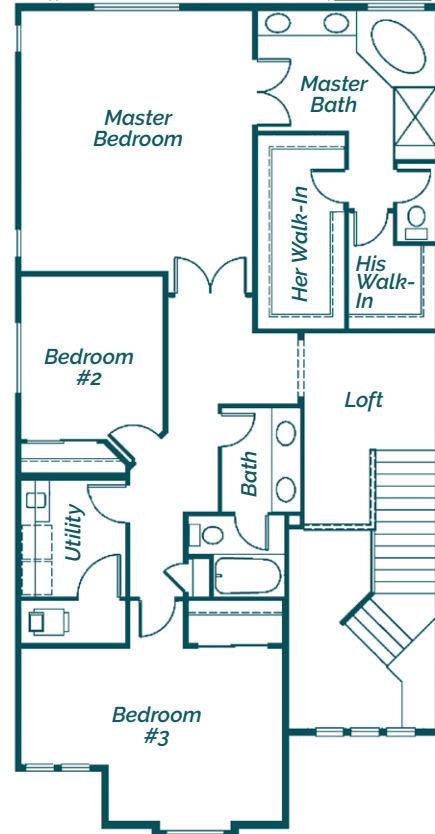
- *Approx. 3,832 Total Living Sq. Ft.*
- *5-Piece Master Bath*
- *All Wood Custom Cabinets*
- *Slab Granite in Kitchen*
- *Front & Backyard Landscaping*
- *Covered Outdoor Living Area with Gas Fireplace*

Our Rhododendron plan is an elegant Northwest inspired design featuring a generous open living concept with a beautiful great room overlooking a covered outdoor living area. The main level also offers a Jr. master suite complete with full bath. The upper level has a comfortable master suite with a 5-piece master bath and his & her walk-in closets. Upstairs also features 2 additional bedrooms, a large utility room, loft and full bath,

MAIN LEVEL



UPPER LEVEL



PLEASE NOTE: In a continuous effort to balance market demands for quality and affordability, the builder of this property reserves the right to change plan specifications, prices and availability without notice.



HCHOMES

UNIQUELY NORTHWEST

PLAN NAME: RHODODENDRON (PLAN C)

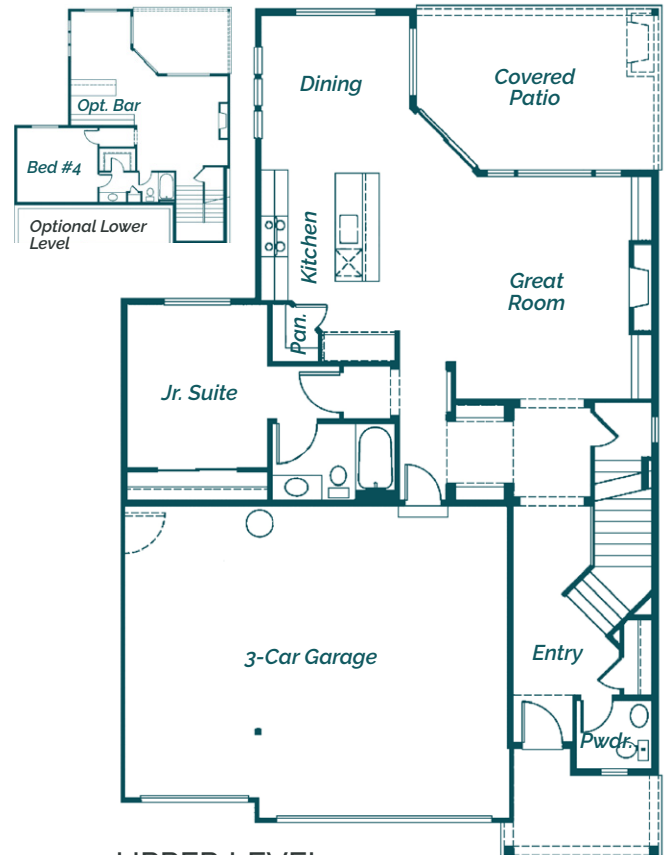


PROPERTY HIGHLIGHTS

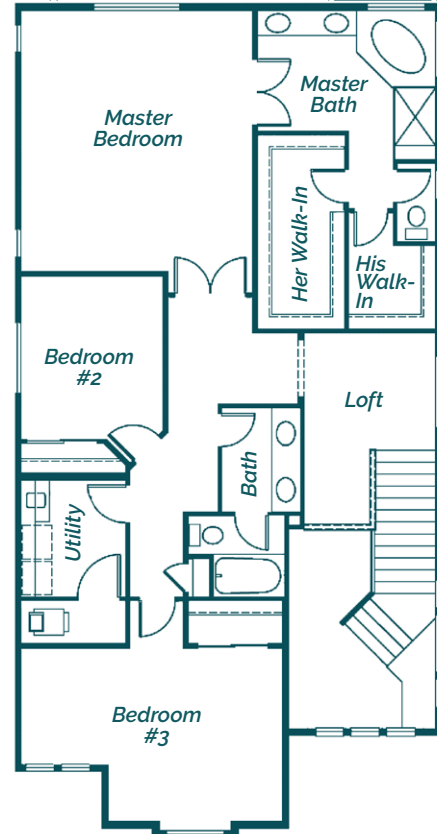
- *Approx. 3,832 Total Living Sq. Ft.*
- *5-Piece Master Bath*
- *All Wood Custom Cabinets*
- *Slab Granite in Kitchen*
- *Front & Backyard Landscaping*
- *Covered Outdoor Living Area with Gas Fireplace*

Our Rhododendron plan is an elegant Northwest inspired design featuring a generous open living concept with a beautiful great room overlooking a covered outdoor living area. The main level also offers a Jr. master suite complete with full bath. The upper level has a comfortable master suite with a 5-piece master bath and his & her walk-in closets. Upstairs also features 2 additional bedrooms, a large utility room, loft and full bath,

MAIN LEVEL



UPPER LEVEL



PLEASE NOTE: In a continuous effort to balance market demands for quality and affordability, the builder of this property reserves the right to change plan specifications, prices and availability without notice.